

SHORT TERM IT JOB TRENDS	Connecticut	●
	Massachusetts	●
	New York Metro	●
	National	▲

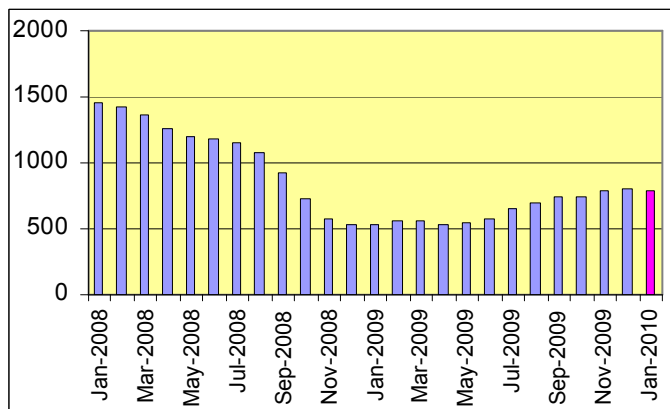
In January, job market activity in Connecticut dropped slightly compared to December. Employers are mulling whether to look for more staff after adding some over the past six months. The exception is the Financial Services sector where demand for more professionals keeps growing. Demand in Healthcare fell for the third month in a row. Meanwhile there is a daily average of 790 job opportunities available for IT professionals in the state.

Table 1: IT Job Openings, Connecticut*

Jan 10	Dec 09	Nov 09	Jan 09	Jan 08
790	810	760	520	1,380

A similar picture developed for the New York Metro area. Here the number of job postings for IT professionals dropped 4.9%, ending a seven months growth streak. Demand in Massachusetts also slowed, dropping 18.3%. The national average declined 7.1%.

Fig.1: IT Open Positions, Connecticut



We recorded a solid increase in demand for IT professionals in Software Development. Employers posted 11.5% more opportunities than in December. At the same time, job openings for Systems Engineers and IT Management remained unchanged while demand for all other major occupational groups declined.

Table 2: IT Job Opening Estimates by Category*

	Jan 10	Jan 09
Total IT Job Market	790	520
Software Development	290	80
Systems Eng./Support	190	130
IT Management	110	110
IT Architects/Consultants	100	100
Systems Administration	40	40
Business/Process Design	30	10
IT Sales and Marketing	20	30
Training/Tech Writing	10	10
Hardware Engineering	0	0
Misc.IT Job Categories	10	10

Table 3: Top 15 Needed Skills (Job Openings*)

	Jan 10	Jan 09
Java	300	70
SQL	260	130
Unix	220	90
C++/VC++	200	80
C#	170	40
Linux	170	50
Perl	160	10
Windows OS	160	80
Business Analysis	160	110
Large system technologies	160	140
Sybase	130	10
XML	130	60
DB2 (IBM)	100	70
OO (analysis / design / programming)	90	30
Microsoft SQL Server	90	70

*) Estimated monthly averages are based on actual count of job openings.

METHODOLOGY

SkillPROOF surveys the inventories of job openings at large, regional and nationwide direct employers. Job openings are counted and verified every 24 hours. All data sources have been verified for timely removal of filled or closed positions. No data from job boards or search firms are included.

For this report SkillPROOF estimates the counts of job openings. Estimates are calculated directly from SkillPROOF's actual daily counts of job openings. As a base for its calculations, SkillPROOF uses data and findings from reports of the Bureau of Labor Statistics (BLS) <http://www.bls.gov>.



CT Technology Council
222 Pitkin St., Suite 113 East Hartford, CT 06108
phone: (860) 289 - 0878
web: <http://www.ct.org>



SkillPROOF Inc.
510 Barnum Ave, Suite 402 • Bridgeport, CT 06608
phone: (917) 463 - 3941 • fax: (815) 642-8694
web: <http://www.skillproof.com>