

SHORT TERM IT JOB TRENDS	Connecticut
	Massachusetts
	New York Metro
	National

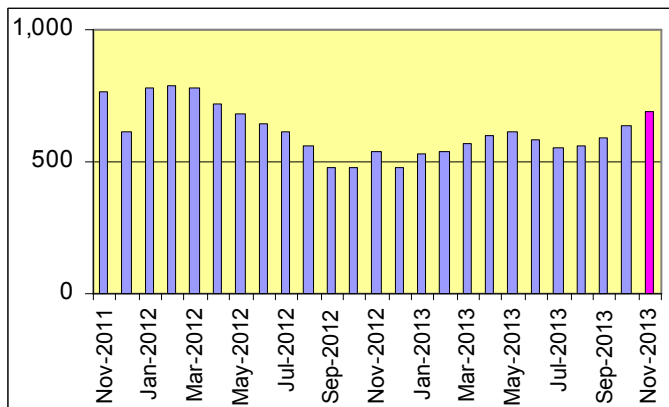
The IT job market in Connecticut continues to improve. In November, employers posted a daily average of 670 job openings for IT professionals with work locations in the state. This is 8.1% more than in October. Compared to November of last year labor demand is up 21.8%. While this shows some progress the labor market is still 11.8% smaller than in November 2011. It is also a far cry from the peak of IT labor demand we measured in June 2006 when employers posted a daily average of 2,360 job openings. That would be more than 3 times than what employers post today.

Job market participation from employers in Financial Services / Banking continued to increase after a slight drop in October. This sector has showed growing labor demand since December 2012 when posted job openings bottomed out. Job postings in Health Care dropped for the first time since May.

Table 1: IT Job Openings, Connecticut*

Nov 13	Oct 13	Sep 12	Nov 12	Nov 11
670	620	590	550	760

Fig.1: IT Open Positions, Connecticut*



In November, the national job market declined 3.7%

*) Estimated monthly averages are based on actual count of job openings.

Table 2: IT Job Opening Estimates by Category*

	Nov 13	Nov 12
Total IT Job Market	670	550
IT Architects/Consultants	160	150
Software Development	140	110
Systems Eng./Support	130	70
IT Management	100	90
Business/Process Design	50	20
Systems Administration	40	30
IT Sales and Marketing	20	50
Training/Tech Writing	10	10
Misc.IT Job Categories	20	20

Table 3: Top 15 Needed Skills (Job Openings*)

	Nov 13	Nov 12
Business Analysis	190	120
SQL	160	140
Large system technologies	150	80
Java	140	90
Oracle DBMS	130	90
C++/VC++	100	60
Mainframe	100	50
Windows OS	90	70
Unix	90	70
Microsoft SQL Server	80	70
Linux	80	40
Offshore team coordination	70	40
XML	70	40
Web Services	70	20
ETL	60	30



CT Technology Council
222 Pitkin St., Suite 113 East Hartford, CT 06108
phone: (860) 289 - 0878
web: <http://www.ct.org>

METHODOLOGY

SkillPROOF surveys the inventories of job openings at large, regional and nationwide direct employers. Job openings are counted and verified every 24 hours. All data sources have been verified for timely removal of filled or closed positions. No data from job boards or search firms are included.

For this report SkillPROOF estimates the counts of job openings. Estimates are calculated directly from SkillPROOF's actual daily counts of job openings. As a base for its calculations, SkillPROOF uses data and findings from reports of the Bureau of Labor Statistics (BLS) <http://www.bls.gov>.



SkillPROOF Inc.
510 Barnum Ave, Suite 402 • Bridgeport, CT 06608
phone: (917) 463 - 3941 • fax: (815) 642-8694
web: <http://www.skillproof.com>