

**SHORT
TERM
IT JOB
TRENDS**

Connecticut	▲
Massachusetts	●
New York Metro	▼
National	▼

The IT job market in Connecticut is crawling in the right direction. Employers in the state posted 1.5% more job openings in December than in November. The good news is

that the increased demand materialized towards the end of the year when the cyclical job demand typically declines. This may indicate that the job market for IT professionals in Connecticut may see more improvements in 2014.

In December, employers in Insurance and HiTech posted more job opportunities. Demand from both sectors has been on the rise since end of summer of last year. More demand from insurance companies seems to correlate with the Affordable Care Act taking hold now. The Health Care sector supported the job market last year and inched higher again during the last 30 days..

In December, the national job market barely changed. The national average declined 0.6%. Labor demand across the country was the weakest last year since 2010.

Table 1: IT Job Openings, Connecticut*

Dec 13	Nov 13	Oct 13	Dec 12	Dec 11
680	670	620	480	730

Fig.1: IT Open Positions, Connecticut*

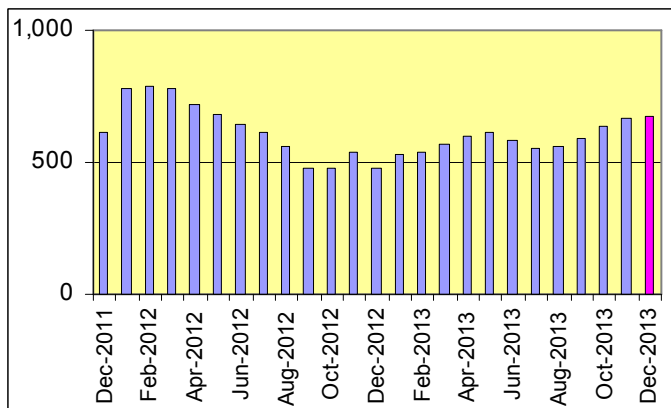


Table 2: IT Job Opening Estimates by Category*

	Dec 13	Dec 12
Total IT Job Market	680	480
Software Development	150	100
IT Architects/Consultants	150	120
Systems Eng./Support	150	70
IT Management	90	90
Business/Process Design	50	10
Systems Administration	40	40
IT Sales and Marketing	30	40
Training/Tech Writing	20	10
Misc.IT Job Categories	10	20

Table 3: Top 15 Needed Skills (Job Openings*)

	Dec 13	Dec 12
SQL	180	150
Business Analysis	180	130
Java	150	90
Large system technologies	150	80
Oracle DBMS	130	100
C++/VC++	110	50
Unix	110	60
Windows OS	100	80
Microsoft SQL Server	90	80
Linux	80	40
XML	80	40
JavaScript	80	20
Mainframe	80	40
Web Services	70	30
Offshore team coordination	60	50



CT Technology Council
222 Pitkin St., Suite 113 East Hartford, CT 06108
phone: (860) 289 - 0878
web: <http://www.ct.org>

*) Estimated monthly averages are based on actual count of job openings.

METHODOLOGY

SkillPROOF surveys the inventories of job openings at large, regional and nationwide direct employers. Job openings are counted and verified every 24 hours. All data sources have been verified for timely removal of filled or closed positions. No data from job boards or search firms are included.

For this report SkillPROOF estimates the counts of job openings. Estimates are calculated directly from SkillPROOF's actual daily counts of job openings. As a base for its calculations, SkillPROOF uses data and findings from reports of the Bureau of Labor Statistics (BLS) <http://www.bls.gov>.



SkillPROOF Inc.
510 Barnum Ave, Suite 402 • Bridgeport, CT 06608
phone: (917) 463 - 3941 • fax: (815) 642-8694
web: <http://www.skillproof.com>