

SHORT TERM IT JOB TRENDS

- Connecticut ●
- Massachusetts ▼
- New York Metro ▼
- National ▼

The drain of job opportunities for IT professional in Connecticut has stopped, at least for now. Employers in the state kept their level of vacancies

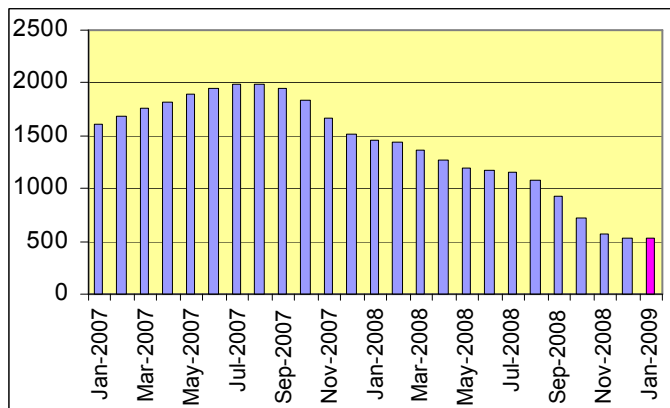
compared with December just updating the information. Nevertheless, job seekers continue to face a grim job market which will likely stay flat throughout 2009.

Table 1: IT Job Openings, Connecticut*

Jan 09	Dec 08	Nov 08	Jan 08	Jan 07
520	520	500	1380	1550

Compared with Connecticut, other regional job market fared worse. The job situation in the Big Apple continued to deteriorate with no end in sight yet. Even worse was the situation in Massachusetts where the decline was even more dramatic. Last year, the job market there held up for a longer time but is now collapsing. At a national level, the number of IT job vacancies declined 10.6%.

Fig. 1: IT Open Positions, Connecticut



Technology skills are still in demand but its back to the bread and butter of financial services firms in the state: Mainframe computing. Considered by many as “dinosaurs”, these tried and true, bullet proof systems remain the foundation of this dominant industry in the state.

*) Estimated monthly averages are based on actual count of job openings.

Table 2: IT Job Opening Estimates by Category*

	Jan 09	Jan 08
Total IT Job Market	520	1380
Systems Eng./Support	130	270
IT Management	110	370
IT Architects/Consultants	100	190
Software Development	80	290
Systems Administration	40	90
IT Sales and Marketing	30	50
Business/Process Design	10	90
Training/Tech Writing	10	10
Misc.IT Job Categories	10	20

Table 3: Top 15 Needed Skills (Job Openings*)

	Jan 09	Jan 08
Large system technologies	140	270
SQL	130	350
Business Analysis	110	310
Mainframe	90	110
Oracle DBMS	90	250
Unix	90	230
C++/VC++	80	40
Windows OS	80	210
Java	70	160
Microsoft SQL Server	70	140
DB2 (IBM)	70	120
XML	60	110
VB/VB.NET	50	110
Linux	50	90
Web Services	50	70



CT Technology Council
222 Pitkin St., Suite 113 East Hartford, CT 06108
phone: (860) 289 - 0878
web: <http://www.ct.org>

METHODOLOGY

SkillPROOF surveys the inventories of job openings at large, regional and nationwide direct employers. Job openings are counted and verified every 24 hours. All data sources have been verified for timely removal of filled or closed positions. No data from job boards or search firms are included.

For this report SkillPROOF estimates the counts of job openings. Estimates are calculated directly from SkillPROOF's actual daily counts of job openings. As a base for its calculations, SkillPROOF uses data and findings from reports of the Bureau of Labor Statistics (BLS) <http://www.bls.gov>.



SkillPROOF Inc.
510 Barnum Ave, Suite 402 • Bridgeport, CT 06608
phone: (917) 463 - 3941 • fax: (815) 642-8694
web: <http://www.skillproof.com>