

<b>SHORT TERM IT JOB TRENDS</b>	<b>Connecticut</b> ●
	<b>Massachusetts</b> ▲
	<b>New York Metro</b> ●
	<b>National</b> ▲

The job market in Connecticut did not change much over the past 30 days. Employers posted a daily average of 480 job openings for professionals in Information Technology. This is

2.0% less than in October. According to the CT Department of Labor IT heavy industry sectors Financial Activities and Information canceled each other out in terms of payroll gains and losses. For October CT DOL reports a plus of 200 jobs for employers in Financial Services and a minus of 300 jobs for companies in the Information sector. Employers in both sectors are employing fewer people now than earlier this year.

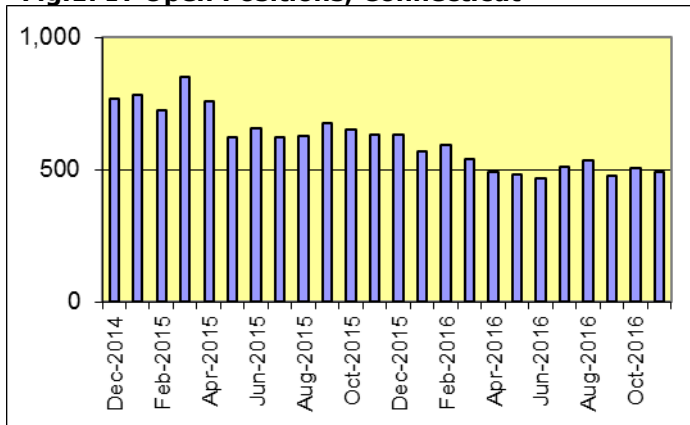
In Connecticut, the demand for Software Developers stands out from the rest of the occupations. While demand has not increased much over the past year it is to note that other IT occupations have lost job openings at the same time including IT Management and Systems Engineering / Support.

The national IT job market grew by 2.0% in November.

**Table 1: IT Job Openings, Connecticut\***

Nov 16	Oct 16	Sep 16	Nov 15	Nov 14
480	500	480	590	760

**Fig.1: IT Open Positions, Connecticut\***



**Table 2: IT Job Opening Estimates by Category\***

	Nov 16	Nov 15
<b>Total IT Job Market</b>	<b>480</b>	<b>630</b>
Software Development	140	130
IT Management	80	100
Systems Administration	70	80
Systems Eng./Support	70	110
IT Architects/Consultants	60	150
IT Sales and Marketing	30	30
Business/Process Design	20	20
Misc.IT Job Categories	10	0

**Table 3: Top 15 Needed Skills (Job Openings\*)**

	Nov 16	Nov 15
Business Analysis	150	140
SQL	140	120
Oracle DBMS	130	80
Large system technologies	110	90
Java	100	90
Unix	90	80
Linux	70	60
Web Services	70	70
Mainframe	70	50
XML	60	50
Windows OS	60	50
OO (analysis / design / programming)	50	30
Offshore team coordination	50	40
Microsoft SQL Server	50	50
C++/VC++	50	30



**CT Technology Council**  
222 Pitkin St., Suite 113 East Hartford, CT 06108  
phone: (860) 289 - 0878  
web: <http://www.ct.org>

\*) Estimated monthly averages are based on actual count of job openings.

**METHODOLOGY**

SkillPROOF surveys the inventories of job openings at large, regional and nationwide direct employers. Job openings are counted and verified every 24 hours. All data sources have been verified for timely removal of filled or closed positions. No data from job boards or search firms are included.

For this report SkillPROOF estimates the counts of job openings. Estimates are calculated directly from SkillPROOF's actual daily counts of job openings. As a base for its calculations, SkillPROOF uses data and findings from reports of the Bureau of Labor Statistics (BLS) <http://www.bls.gov>.



**KRAZOOM Inc.**  
510 Barnum Ave, Suite 402 • Bridgeport, CT 06608  
phone: (917) 463 - 3941 • fax: (815) 642-8694  
web: <http://www.krazoom.com>